

troyke^o
changing the degree of accuracy

A work of art... and function.

Our rotary tables are customizable to perfectly match your specifications. Outstanding performance combined with immediate customer service response guarantees minimal to zero outages. Our rotary tables will help you meet your production goals.

troyke^o DL Series - A Model

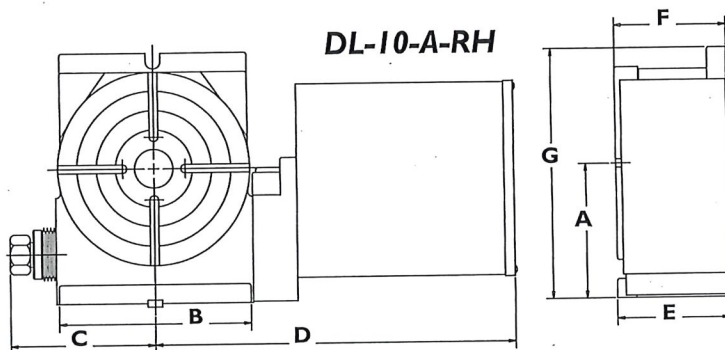
Horizontal or Vertical Mount

Standard Features:

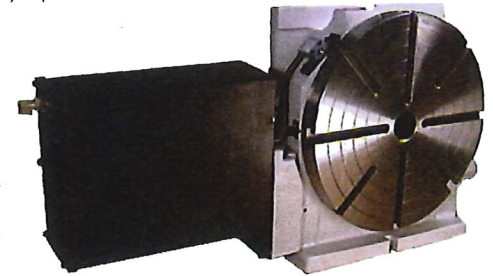
- 8 sizes (6.5" - 25" table diameters)
- Dual lead wormset simplifies backlash adjustment
- C907 bronze worm gear and hardened and ground worm running in a bath of oil
- High precision spindle bearings
- Turcite bearing surface
- Internal pneumatic brake (16.5", 20", & 25" dual rack & pinion)
- Precision ground surfaces

Optional Features:

- Chucks - (Manual or Pneumatic)
- Collet fixtures - (Manual or Pneumatic)
- Tailstocks - (Manual or Pneumatic)
- Single Axis programmable control
- Clamping outboard supports (Pneu. or Hyd.)
- Ball lock™ sub plate and fixture plate
- Cables - for interfacing to machine tool
- Compatible with all standard servo motors
- Oversize thru hole
- Direct mount feedback (Heidenhain scale for accuracy up to +/- 2 arc seconds)



DL-15-A-LH



MODEL	A	B	C	D*	E	F	G
DL-6.5-A*1	5.118 [130.0]	7.50 [191]	5.25 [133]	19.38 [492]	5.50 [140]	N/A	11.81 [300]
DL-9-A	6.375 [161.9]	9.50 [241]	6.43 [163]	20.37 [517]	5.00 [127]	3.81 [97]	11.31 [287]
DL-10-A	7.000 [177.8]	10.25 [260]	7.56 [192]	22.50 [517]	5.62 [143]	5.87 [149]	13.00 [330]
DL-12-A	8.500 [215.9]	12.00 [305]	8.56 [217]	23.50 [596]	6.00 [152]	6.18 [157]	15.00 [381]
DL-15-A	10.000 [254.0]	14.87 [378]	10.00 [254]	25.56 [649]	6.00 [152]	6.18 [157]	18.00 [457]
DL-16.5-A*1	10.000 [254.0]	17.25 [438]	11.50 [291]	11.75 [298]	9.25 [234]	N/A	18.50 [469]
DL-20-A	12.000 [304.8]	21.00 [533]	13.06 [332]	25.25 [641]	7.87 [200]	7.93 [201]	21.87 [556]
DL-25-A	14.750 [374.6]	21.00 [533]	13.06 [332]	25.25 [641]	7.87 [200]	7.93 [201]	27.38 [695]

SPECIFICATIONS

MODEL	DL-6.5-A	DL-9-A	DL-10-A	DL-12-A	DL-15-A	DL-16.5-A	DL-20/25-A
TURNTABLE DIAMETER [MM]	6.50 [165]	9.00 [229]	10.00 [254]	12.00 [304]	15.00 [381]	16.500 [419]	20.00 [508]
STANDARD THRU HOLE DIA [MM]	1.181 [30.0]	1.181 [30.0]	1.968 [50.0]	1.968 [50.0]	1.968 [50.0]	6.350 [161.2]	2.000 [50.8]
OVERSIZE THRU HOLE DIA [MM]	N/A	N/A	3.000 [76.2]	4.125 [104.8]	4.125 [104.8]	N/A	10.250 [260.4]
MAXIMUM THRU HOLE DIA [MM]	N/A	N/A	4.50 [143.0]*1	6.100 [154]*2	6.00 [152.4]	N/A	12.500 [317.5]*2
HORIZONTAL LOAD CAPACITY [KG]	N/A	150 [68]	800 [363]	800 [363]	800 [363]	N/A	4000 [1818]
VERTICAL LOAD CAPACITY [KG]	75 [34]	100 [45]	300 [136]	300 [136]	300 [136]	1,000 [454]	2000 [909]
FACEPLATE SLOT WIDTH [MM]	.47 [12] X 4	.47 [12] X 4	.47 [12] X 4	.47 [12] X 8	.63 [16] X 8	.63 [16] X 8	.56 [14.2] X 8
STANDARD TOTAL GEAR RATIO	90:1	180:1	180:1	180:1	180:1	180:1	180:1
ALTERNATE TOTAL GEAR RATIO	120:1	360:1	360:1	360:1	360:1	360:1	360:1
MAX. SPEED RANGE (STD RATIO)	0-22 RPM	0-10 RPM	0-10 RPM	0-10 RPM	0-10 RPM	0-10 RPM	0-10 RPM
STD. CONT. TORQUE LBS-FT [NM]	94 [127]	187 [254]	375 [508]	375 [508]	375 [508]	375 [508]	750 [1017]
BRAKE METHOD	PNEUMATIC	PNEUMATIC	PNEUMATIC	PNEUMATIC	PNEUMATIC	PNEUMATIC	PNEUMATIC
BRAKE TORQUE LBS-FT [NM]	125 [169]	125 [169]	300 [407]	345 [468]	345 [468]	800 [1085]	800 [1085]
PROGRAMMABLE RESOLUTION	.001 DEG.	.001 DEG.	.001 DEG.	.001 DEG.	.001 DEG.	.001 DEG.	.001 DEG.
STD. TOTAL ANGULAR ACCURACY	60 SEC.	30 SEC.	30 SEC.	30 SEC.	30 SEC.	30 SEC.	20 SEC.
STD. REPEATABILITY	10 SEC.	10 SEC.	10 SEC.	10 SEC.	10 SEC.	10 SEC.	5 SEC.
OPT. (H OR I) ANGLR. ACCURACY	+/-5	+/-5	+/-5 +/-3.6	+/-5 +/-3.6	+/-5 +/-3.6	+/-5 +/-3.6	+/-5 +/-3.6
OPT. (H OR I) REPEATABILITY	+/-2	+/-2	+/-2 +/-1	+/-2 +/-1	+/-2 +/-1	+/-2 +/-1	+/-2 +/-1
UNIT WEIGHT LBS [KG]	109 [49]	144 [65]	205 [92]	253 [114]	347 [156]	400 [179]	690 [310]
SHIP WEIGHT LBS [KG]	159 [72]	194 [87]	255 [115]	303 [136]	397 [179]	450 [202]	825 [371]

*Depends on type of servo motor *1 Vertical mount only *2 Table is less the pneumatic brake.

troyke^o DL Series - B Model

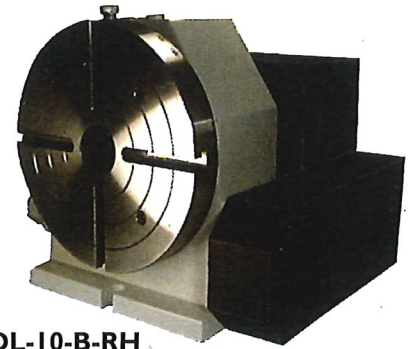
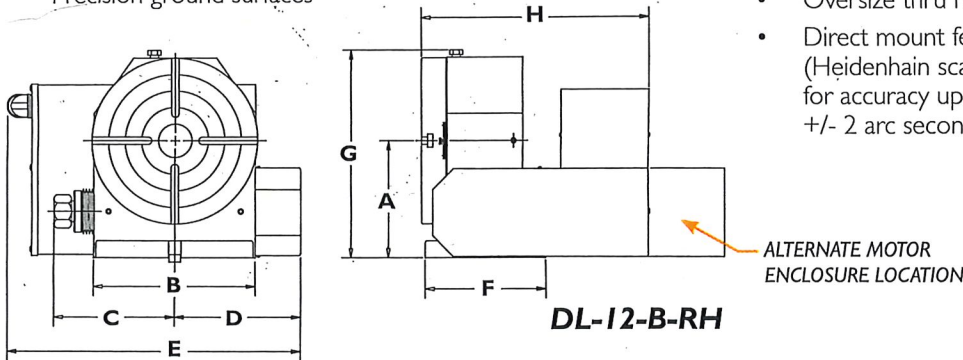
Vertical Mount only (best choice for Vertical Spindle Machines)

Standard Features:

- 8 sizes (6.5" - 25" table diameters)
- Dual lead wormset simplifies backlash adjustment
- C907 bronze wormgear and hardened and ground worm running in a bath of oil
- High precision spindle bearings
- Turcite bearing surface
- Internal pneumatic brake (16.5", 20" and 25" dual rack & pinion)
- Precision ground surfaces

Optional Features:

- Chucks - (Manual or Pneumatic)
- Collet fixtures - (Manual or Pneumatic)
- Tailstocks - (Manual or Pneumatic)
- Single Axis programmable control
- Clamping outboard supports (Pneumatic or Hydraulic)
- Ball Lock™ sub plate and fixture plate
- Cables - for interfacing to machine tool
- Compatible with all standard servo motors
- Oversize thru hole
- Direct mount feedback (Heidenhain scale for accuracy up to +/- 2 arc seconds)



MODEL	A	B	C	D	E*	F	G	H
DL-6.5-B	5.118 [130.0]	7.50 [191]	5.25 [133]	7.25 [184]	17.50 [444]	5.50 [140]	8.75 [222]	11.62 [295]
DL-9-B	6.375 [161.9]	9.50 [241]	6.43 [163]	8.31 [211]	16.50 [419]	5.00 [127]	11.31 [287]	12.43 [316]
DL-10-B	7.000 [177.8]	9.75 [248]	7.25 [184]	8.12 [206]	18.25 [463]	7.25 [184]	12.50 [318]	13.68 [348]
DL-12-B	8.500 [215.9]	12.00 [305]	8.50 [216]	9.68 [246]	18.56 [471]	7.50 [191]	15.00 [381]	14.62 [371]
DL-15-B	10.00 [254.0]	14.87 [378]	10.00 [254]	10.88 [276]	20.88 [530]	8.00 [203]	18.00 [457]	14.81 [376]
DL-16.5-B	10.00 [254.0]	17.25 [438]	11.50 [291]	12.25 [311]	23.75 [603]	9.25 [234]	18.50 [469]	16.00 [406]
DL-20-B	13.00 [330.0]	21.00 [533]	13.06 [332]	14.00 [355]	27.06 [687]	10.12 [258]	23.00 [584]	16.00 [406]
DL-25-B	15.75 [400.0]	21.00 [533]	13.06 [332]	14.00 [355]	27.06 [687]	10.12 [258]	25.75 [654]	16.00 [406]

SPECIFICATIONS

MODEL	DL-6.5-B	DL-9-B	DL-10-B	DL-12-B	DL-15-B	DL-16.5-B	DL-20/25-B
TURNTABLE DIAMETER [MM]	6.5 [165]	9.0 [229]	10.0 [254]	12.0 [304]	15.0 [381]	16.5 [419]	20.0 [508]
STANDARD THRU HOLE DIA [MM]	1.181 [30.0]	1.181 [30.0]	1.968 [50.0]	1.968 [50.0]	1.968 [50.0]	6.350 [161.2]	2.000 [50.8]
OVERSIZE THRU HOLE DIA [MM]	N/A	N/A	3.000 [76.2]	4.125 [104.8]	4.125 [104.8]	N/A	10.250 [260.4]
MAXIMUM THRU HOLE DIA [MM]	N/A	N/A	4.50 [114.3]*2	6.100 [154.9]*2	6.00 [152.4]	N/A	12.500 [317.5]*2
VERTICAL LOAD CAPACITY [KG]	75 [34]	100 [45]	300 [136]	300 [136]	300 [136]	1,000 [454]	2,000 [909]
FACEPLATE T-SLOT WIDTH [MM]	.47 [12] X 4	.47 [12] X 4	.47 [12] X 4	.47 [12] X 8	.63 [16] X 8	.63 [16] X 8	.56 [14.2] X 8
STANDARD TOTAL GEAR RATIO	90:1	180:1	180:1	180:1	180:1	180:1	180:1
ALTERNATE TOTAL GEAR RATIO	120:1 180:1	360:1	120:1 180:1	360:1	120:1	360:1	360:1
MAX. SPEED RANGE (STD RATIO)	0-22 RPM	0-10 RPM	0-10 RPM	0-10 RPM	0-10 RPM	0-10 RPM	0-10 RPM
STD. CONT. TORQUE LBS-FT [NM]	94 [127]	187 [254]	375 [508]	375 [508]	375 [508]	375 [508]	750 [1017]
BRAKE METHOD	PNEUMATIC	PNEUMATIC	PNEUMATIC	PNEUMATIC	PNEUMATIC	PNEUMATIC	PNEUMATIC
BRAKE TORQUE LBS-FT [NM]	125 [169]	125 [169]	300 [407]	345 [468]	345 [468]	800 [1085]	800 [1085]
PROGRAMMABLE RESOLUTION	.001 DEG.	.001 DEG.	.001 DEG.	.001 DEG.	.001 DEG.	.001 DEG.	.001 DEG.
STD. TOTAL ANGULAR ACCURACY	60 SEC.	30 SEC.	30 SEC.	30 SEC.	30 SEC.	30 SEC.	20 SEC.
STD. REPEATABILITY	10 SEC.	10 SEC.	10 SEC.	10 SEC.	10 SEC.	10 SEC.	5 SEC.
OPT. (H OR I) ANGLR. ACCURACY	+/-5	+/-5	+/-5 +/-3.6	+/-5 +/-3.6	+/-5 +/-3.6	+/-5 +/-3.6	+/-5 +/-3.6
OPT. (H OR I) REPEATABILITY	+/-2	+/-2	+/-2 +/-1	+/-2 +/-1	+/-2 +/-1	+/-2 +/-1	+/-2 +/-1
UNIT WEIGHT LBS [KG]	107 [48]	142 [64]	203 [91]	251 [113]	345 [155]	400 [179]	696 [313]
SHIP WEIGHT LBS [KG]	157 [71]	196 [88]	253 [114]	301 [135]	395 [178]	450 [202]	831 [374]

* Depends on type of servo motor *1 Vertical mount only. *2 Table is less the pneumatic brake.

troyke^o NC Series - A Model

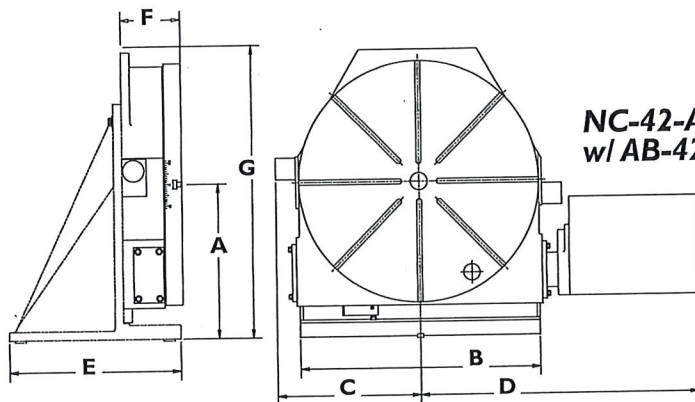
Horizontal Mount - Vertical Mount (42" - 84" requires Angle Bracket Option)

Standard Features:

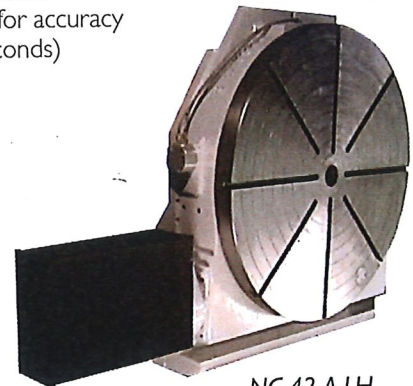
- 6 sizes (30" - 84" table diameters)
- C907 bronze wormgear and hardened and ground worm running in a bath of oil
- High precision spindle bearings
- Turcite bearing surface
- Dual rack & pinion pneumatic brake
- Precision ground surfaces

Optional Features:

- Chucks - (Manual or Pneumatic)
- Tailstocks - (Manual or Pneumatic)
- Single Axis programmable control
- Clamping outboard supports (Pneumatic or Hydraulic)
- Ball Lock™ sub plate
- Cables - for interfacing to machine tool
- Compatible with all standard servo motors
- Direct mount feedback (Heidenhain scale for accuracy up to +/- 2 arc seconds)



**NC-42-A-RH
w/ AB-42 ANGLE PLATE**



**NC-42-A-LH
w/ OPTIONAL AB-42**

MODEL	A	B	C	D	E	F	G
NC-30-A	17.75 [450]	29.75 [755]	19.50 [495]	42.68 [1084]	8.25 [209]	8.50 [215]	32.75 [831]
NC-36-A	20.00 [508]	29.75 [755]	19.50 [495]	42.68 [1084]	8.25 [209]	8.50 [215]	32.75 [831]
NC-42-A	27.00 [685]	43.00 [1092]	26.50 [673]	48.75 [1238]	30.00 [762]	10.50 [266]	50.00 [1270]
NC-48-A	27.00 [685]	43.00 [1092]	26.50 [673]	48.75 [1238]	30.00 [762]	10.50 [266]	50.00 [1270]
NC-60-A	35.50 [901]	62.00 [1574]	31.00 [787]	43.00 [1092]	30.50 [774]	10.50 [266]	65.50 [1663]
NC-84-A	43.00 [1092]	62.00 [1574]	42.00 [1066]	43.00 [1092]	30.50 [774]	10.50 [266]	85.00 [2159]

SPECIFICATIONS

MODEL	NC-30-A	NC-36-A	NC-42-A	NC-48-A	NC-60-A	NC-84-A
TURNTABLE DIAMETER [MM]	30.00 [762]	36.00 [914]	42.00 [1066]	48.00 [1219]	60.00 [1524]	84.00 [2133]
STANDARD THRU HOLE DIA [MM]	1.500 [38]	1.500 [38]	3.000 [76]	3.000 [76]	3.000 [76]	3.000 [76]
OVERSIZE THRU HOLE DIA [MM]	10.250 [260]	10.250 [260]	14.000 [357]	N/A	20.000 [508]	20.000 [508]
MAXIMUM THRU HOLE DIA [MM]	16.000 [406]	16.000 [406]	18.000 [457]	N/A	30.000 [762]	30.000 [762]
HORIZONTAL LOAD CAPACITY [KG]	4,000 [1813]	4,000 [1813]	7,000 [3173]	7,000 [3173]	15,000 [6800]	15,000 [6800]
VERTICAL LOAD CAPACITY [KG]	2,000 [906]	2,000 [906]	4,000 [1813]	4,000 [1813]	7,000 [3173]	7,000 [3173]
FACEPLATE T-SLOT WIDTH [MM]	.68 [17.2] X 6	.68 [17.2] X 6	.81 [20.5] X 6	.81 [20.5] X 6	.81 [20.5] X 6	.81 [20.5] X 6
STANDARD TOTAL GEAR RATIO	360:1	360:1	360:1	360:1	720:1	720:1
ALTERNATE TOTAL GEAR RATIO	180:1 720:1	180:1 720:1	180:1 720:1	180:1 720:1	1440:1	1440:1
MAX. SPEED RANGE (STD RATIO)	0-5	0-5	0-4	0-4	0-2	0-2
STD. CON. TORQUE LBS-FT [NM]	3,000 [4053]	3,000 [4053]	4,500 [6079]	4,500 [6079]	9,000 [12159]	9,000 [12159]
BRAKE METHOD	PNEUMATIC	PNEUMATIC	PNEUMATIC	PNEUMATIC	PNEUMATIC	PNEUMATIC
BRAKE TORQUE LBS-FT [NM]	1111 [1506]	1111 [1506]	1550 [2102]	1550 [2102]	2950 [4000]	2950 [4000]
PROGRAMMABLE RESOLUTION	.001 DEG.	.001 DEG.	.001 DEG.	.001 DEG.	.001 DEG.	.001 DEG.
STD. TOTAL ANGULAR ACCURACY	20 SEC.	20 SEC.	40 SEC.	40 SEC.	40 SEC.	40 SEC.
STD. REPEATABILITY	5 SEC.	5 SEC.	10 SEC.	10 SEC.	10 SEC.	10 SEC.
OPT. (H OR I) ANGLR. ACCURACY	+/-5 +/-3.6	+/-5 +/-3.6	+/-5 +/-3.6	+/-5 +/-3.6	+/-5 +/-3.6	+/-5 +/-3.6
OPT. (H OR I) REPEATABILITY	+/-2 +/-1	+/-2 +/-1	+/-2 +/-1	+/-2 +/-1	+/-2 +/-1	+/-2 +/-1
UNIT WEIGHT LBS [KG]	1,400 [630]	1,500 [675]	4,200 [1890]	4,350 [1957]	5,500 [2475]	6,150 [2767]
SHIP WEIGHT LBS [KG]	1,550 [697]	1,650 [742]	4,500 [2025]	4,650 [2092]	5,800 [2610]	6,500 [2925]

* Depends on type of servo motor

troyke^o NC Series - B Model

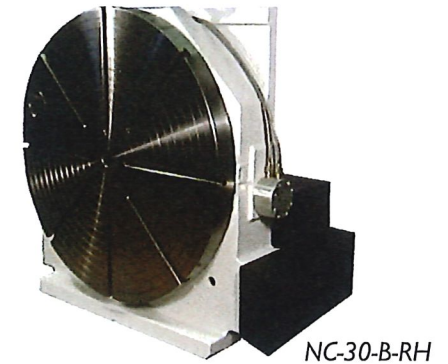
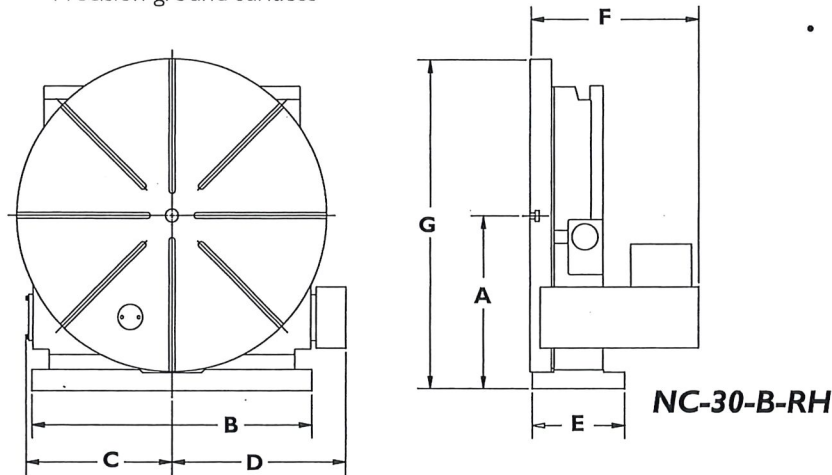
Vertical Mount – (42" - 84" are Horizontal Mount only) - see HBM Series

Standard Features:

- 2 sizes (30" - 36" table diameters)
- C907 bronze wormgear and hardened and ground worm running in a bath of oil
- High precision spindle bearings
- Turcite bearing surface
- Dual rack & pinion pneumatic brake
- Precision ground surfaces

Optional Features:

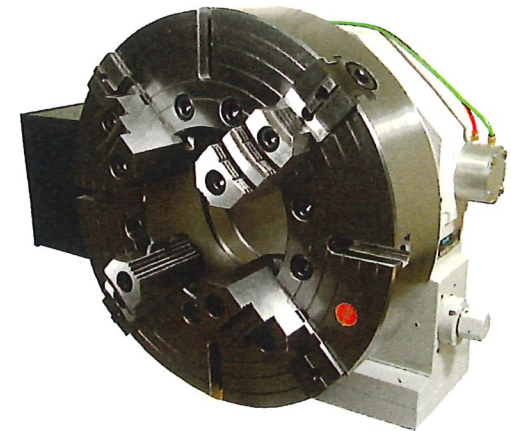
- Chucks - (Manual or Pneumatic)
- Tailstocks - (Manual or Pneumatic)
- Single Axis programmable control
- Clamping outboard supports (Pneumatic or Hydraulic)
- Ball Lock™ sub plate
- Cables - for interfacing to machine tool
- Compatible with all standard servo motors
- Direct mount feedback (Heidenhain scale for accuracy up to +/- 2 arc seconds)



MODEL	A	B	C	D	E	F	G
NC-30-B	17.75 [450]	29.75 [755]	19.50 [495]	20.25 [514]	8.25 [209]	19.43 [493]	32.75 [831]
NC-36-B	20.00 [508]	29.75 [755]	19.50 [495]	20.25 [514]	8.25 [209]	19.43 [493]	32.75 [831]

SPECIFICATIONS

MODEL		NC-30-B	NC-36-B
TURNABLE DIAMETER	[MM]	30.00 [762]	36.00 [914]
STANDARD THRU HOLE DIA	[MM]	1.5000 [38]	1.5000 [38]
OVERSIZE THRU HOLE DIA	[MM]	10.250 [260]	10.250 [260]
MAXIMUM THRU HOLE DIA	[MM]	16.000 [406]	16.000 [406]
HORIZONTAL LOAD CAPACITY	[KG]	4,000 [1813]	4,000 [1813]
VERTICAL LOAD CAPACITY	[KG]	2,000 [906]	2,000 [906]
FACEPLATE T-SLOT WIDTH	[MM]	.68 [17.2] X 6	.68 [17.2] X 6
STANDARD TOTAL GEAR RATIO		360:1	360:1
ALTERNATE TOTAL GEAR RATIO		180:1 720:1	180:1 720:1
MAX. SPEED RANGE (STD RATIO)		0-5	0-5
STD. CON. TORQUE	LBS-FT [NM]	3,000 [4053]	3,000 [4053]
BRAKE METHOD		PNEUMATIC	PNEUMATIC
BRAKE TORQUE	LBS-FT [NM]	1111 [1506]	1111 [1506]
PROGRAMMABLE RESOLUTION		.001 DEG.	.001 DEG.
STD. TOTAL ANGULAR ACCURACY		20 SEC.	20 SEC.
STD. REPEATABILITY		5 SEC.	5 SEC.
OPT. (H OR I) ANGLR. ACCURACY		+/-5 +/-3.6	+/-5 +/-3.6
OPT. (H OR I) REPEATABILITY		+/-2 +/-1	+/-2 +/-1
UNIT WEIGHT	LBS [KG]	1,350 [607]	1,450 [652]
SHIP WEIGHT	LBS [KG]	1,500 [675]	1,600 [720]



Large Bore + Chuck Option

troyke° NC Series - C Model

Horizontal Mount – Vertical Mount (42" - 84" requires Angle Bracket Option)

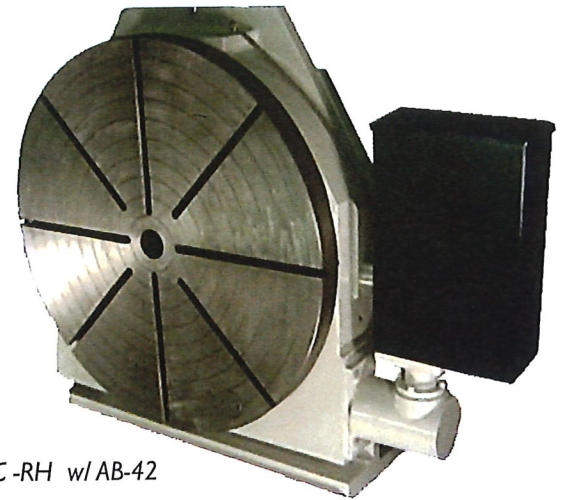
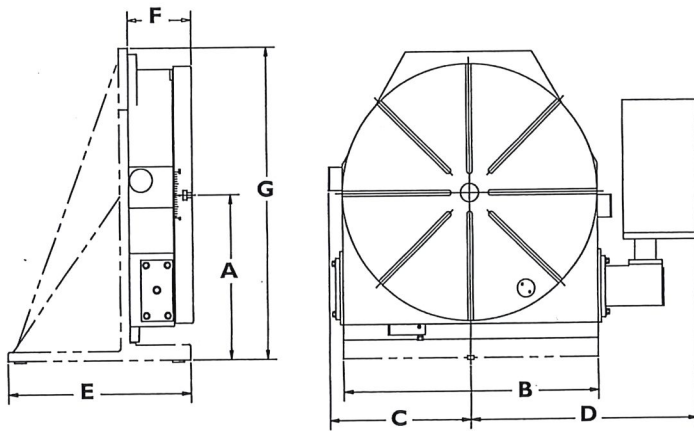
Standard features:

- 3 sizes (30" - 60" table diameters)
- C907 bronze wormgear and hardened and ground worm running in a bath of oil
- High precision spindle bearings
- Turcite bearing surface
- Dual rack & pinion pneumatic brake
- Precision ground surfaces

Optional Features:

- Chucks - (Manual or Pneumatic)
- Tailstocks - (Manual or Pneumatic)
- Single Axis programmable control
- Clamping outboard supports (Pneumatic or Hydraulic)
- Ball Lock™ sub plate
- Cables - for interfacing to machine tool
- Compatible with all standard servo motors
- Direct mount feedback (Heidenhain scale for accuracy up to +/- 2 arc seconds)

NC-42-C-RH w/AB-42

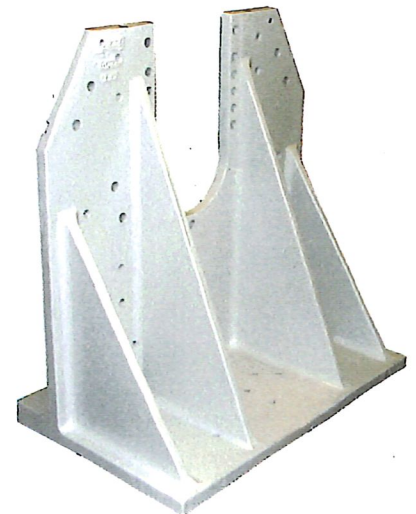


NC-42-C-RH w/AB-42

MODEL	A	B	C	D	E	F	G
NC-30-C	17.75 [450]	29.75 [755]	19.50 [495]	31.43 [798]	8.25 [209]	8.50 [215]	32.75 [831]
NC-42-C	27.00 [685]	43.00 [1092]	26.50 [673]	37.50 [952]	30.00 [762]	10.50 [266]	50.00 [1270]
NC-60-C	35.50 [901]	62.00 [1574]	31.00 [787]	31.75 [806]	30.50 [774]	10.50 [266]	65.50 [1663]

SPECIFICATIONS

MODEL	NC-30-C	NC-42-C	NC-60-C
TURNTABLE DIAMETER [MM]	30.00 [762]	42.00 [1066]	60.00 [1524]
STANDARD THRU HOLE DIA [MM]	1.5000 [38]	3.000 [76]	3.000 [76]
OVERSIZE THRU HOLE DIA [MM]	10.250 [260]	14.000 [357]	20.000 [508]
MAXIMUM THRU HOLE DIA [MM]	16.000 [406]	18.000 [457]	30.000 [762]
HORIZONTAL LOAD CAPACITY [KG]	4,000 [1813]	7,000 [3173]	15,000 [6800]
VERTICAL LOAD CAPACITY [KG]	2,000 [906]	4,000 [1813]	7,000 [3173]
FACEPLATE T-SLOT WIDTH [MM]	.68 [17.2] X 6	.81 [20.5] X 6	.81 [20.5] X 6
STANDARD TOTAL GEAR RATIO	360:1	360:1	720:1
ALTERNATE TOTAL GEAR RATIO	180:1 720:1	180:1 720:1	1440:1
MAX. SPEED RANGE (STD RATIO)	0-5	0-4	0-2
STD. CON. TORQUE LBS-FT [NM]	3,000 [4053]	4,500 [6079]	9,000 [12159]
BRAKE METHOD	PNEUMATIC	PNEUMATIC	PNEUMATIC
BRAKE TORQUE LBS-FT [NM]	1111 [1506]	1550 [2102]	2950 [4000]
PROGRAMMABLE RESOLUTION	.001 DEG.	.001 DEG.	.001 DEG.
STD. TOTAL ANGULAR ACCURACY	20 SEC.	40 SEC.	40 SEC.
STD. REPEATABILITY	5 SEC.	10 SEC.	10 SEC.
OPT. (H OR I) ANGLR. ACCURACY	+/-5 +/-3.6	+/-5 +/-3.6	+/-5 +/-3.6
OPT. (H OR I) REPEATABILITY	+/-2 +/-1	+/-2 +/-1	+/-2 +/-1
UNIT WEIGHT LBS [KG]	1,400 [630]	4,200 [1890]	5,500 [2475]
SHIP WEIGHT LBS [KG]	1,550 [697]	4,500 [2025]	5,800 [2610]



Angle Bracket Option

troyke^o HBM Series

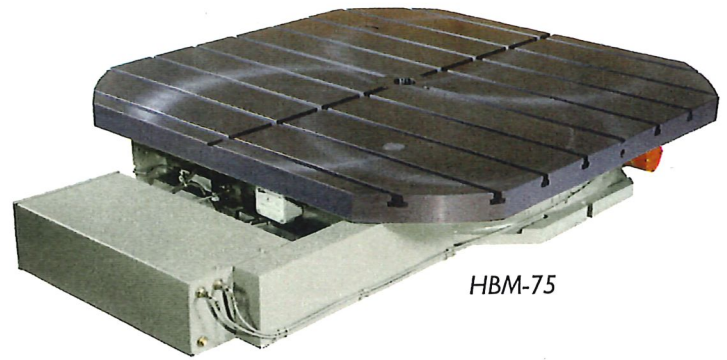
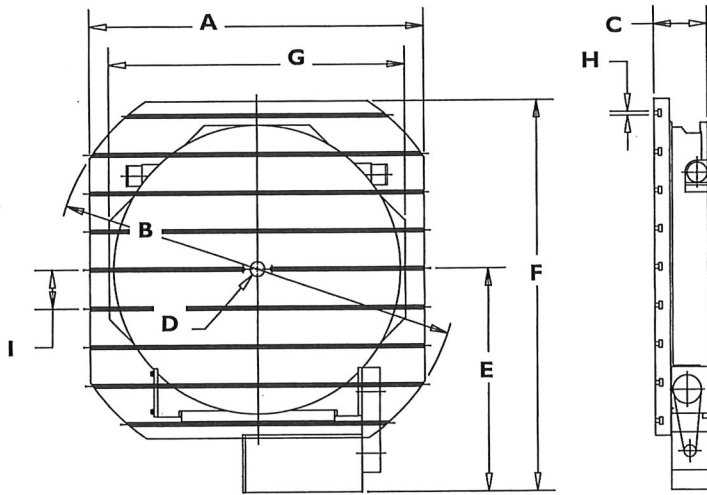
Square Tables primarily used on horizontal boring mill applications

Standard Features:

- 5 sizes (20", 30", 42", 48", 60", 75" square table)
- Load capacity (20"- 30") 4,000 lbs.; (42"-48") 7,000 lbs.; (60"-75") 15,000 lbs.;
- C907 bronze wormgear and hardened and ground worm running in a bath of oil
- 20 arc-seconds accuracy
- High precision spindle bearings
- Turcite bearing surface
- Dual rack & pinion pneumatic brake
- Precision ground surfaces

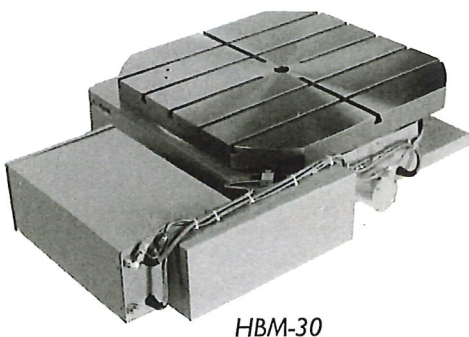
Optional Features:

- Custom table T-slot pattern
- Ball Lock™ sub plates and fixture plates
- Cables - for interfacing to machine tool
- Compatible with all standard servo motors
- Direct mount feedback (Heidenhain scale for accuracy up to +/- 2 arc seconds)



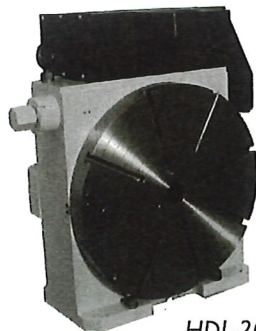
HBM-75

MODEL	A	B	C	D	E	F	G	H	J
HBM-20	20.00 SQ.	25.00	8.00	1.50	26.68	36.68	19.75	.56	4,000 (5)
HBM-30	30.00 SQ.	36.00	8.50	1.50	26.68	41.68	29.75	.68	5,000 (5)
HBM-42	42.00 SQ.	48.00	10.50	3.00	29.00	50.00	43.00	.81	6,000 (7)
HBM-60	60.00 SQ.	84.00	10.50	3.00	46.81	76.81	62.00	.81	8,000 (7)
HBM-75	75.00 SQ.	84.00	10.50	3.00	55.00	92.50	62.00	.81	8,000 (9)



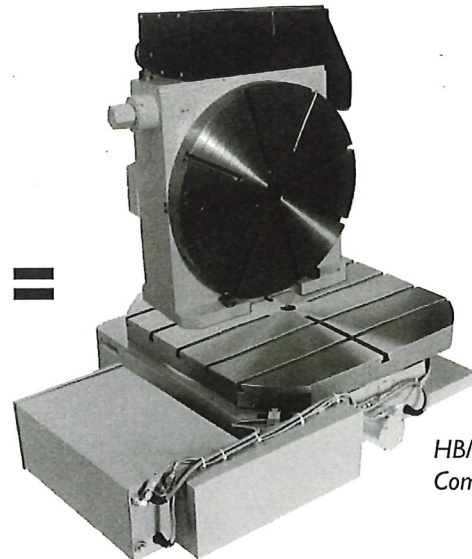
HBM-30

+



HDL-20

=



HBM and HDL
Combination

troyke^o TS & PTS Series — Tailstock

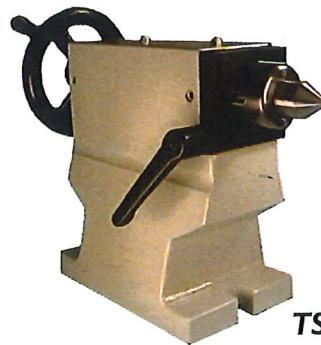
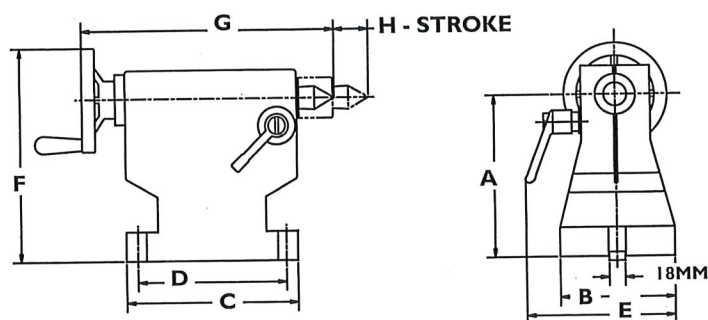
Standard Features:

- Removable dead center
- #3 morse taper on models TS-5c,6,5,9,10,12 and 15
- #5 morse taper on models TS-16,5,20 and 25
- Left hand or right hand locking handle position
- 4 way - 2 position pneumatic valve (pts- model only)
- Spindle oilers on all models
- Matched center height to mating table

Optional Outboard Supports:

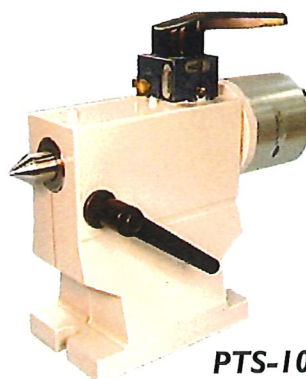
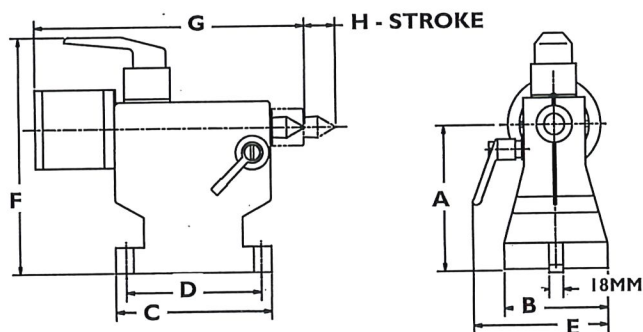
- HOS-Series (hydraulic braking outboard support)
- POS-Series (pneumatic braking outboard support)
- OS-Series (plain bearing outboard support)
- FR-Series (free rotating rotary table)
- AHU (air over hydraulic unit for hos-series)

* for additional information consult factory.



TS-10

MODEL	A	B	C	D	E	F	G	H
TS-6.5	5188 [130.0]	4.50 [114]	6.31 [160]	5.12 [130]	6.50 [165]	7.38 [187]	11.63 [295]	1.25 [31]
TS-9	6.375 [161.9]	5.00 [127]	7.50 [191]	6.50 [165]	6.50 [165]	8.63 [219]	13.12 [333]	1.25 [31]
TS-10	7.000 [177.8]	5.00 [127]	7.50 [191]	6.50 [165]	6.50 [165]	9.25 [235]	13.12 [333]	1.25 [31]
TS-12	8.500 [215.9]	5.00 [127]	7.50 [191]	6.50 [165]	6.50 [165]	10.75 [273]	13.12 [333]	1.25 [31]
TS-15	10.000 [254.0]	5.00 [127]	7.50 [191]	6.50 [165]	6.50 [165]	13.25 [337]	13.12 [333]	1.25 [31]
TS-16.5	10.000 [254.0]	7.50 [190]	13.50 [343]	11.75 [298]	7.50 [191]	12.25 [311]	15.75 [400]	4.50 [114]
TS-20	13.000 [330.0]	7.50 [191]	13.50 [343]	11.75 [298]	8.25 [210]	15.25 [387]	15.75 [400]	4.50 [114]
TS-25	15.750 [400.0]	7.50 [191]	13.50 [343]	11.75 [298]	8.25 [210]	18.00 [457]	15.75 [400]	4.50 [114]



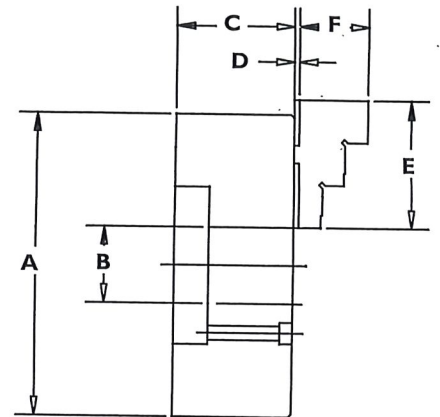
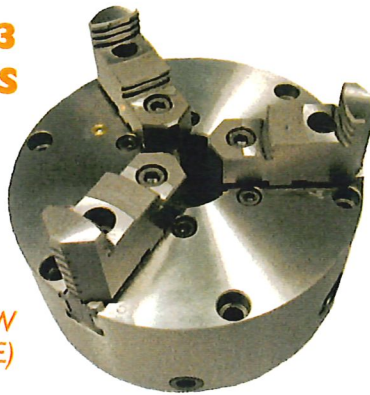
PTS-10

MODEL	A	B	C	D	E	F	G	H
PTS-T5C	4.75 [120]	3.00 [76]	7.00 [177]	5.75 [146]	3.75 [95]	6.75 [171]	11.75 [298]	2.75 [69]
PTS-6.5	5188 [130.0]	4.50 [114]	6.31 [160]	5.12 [130]	6.50 [165]	9.56 [243]	11.81 [300]	1.25 [31]
PTS-9	6.375 [161.9]	5.00 [127]	7.50 [191]	6.50 [165]	6.50 [165]	10.75 [273]	13.25 [337]	1.25 [31]
PTS-10	7.000 [177.8]	5.00 [127]	7.50 [191]	6.50 [165]	6.50 [165]	11.75 [298]	13.25 [337]	1.25 [31]
PTS-12	8.500 [215.9]	5.00 [127]	7.50 [191]	6.50 [165]	6.50 [165]	12.88 [327]	13.25 [337]	1.25 [31]
PTS-15	10.000 [254.0]	5.00 [127]	7.50 [191]	6.50 [165]	6.50 [165]	14.38 [365]	13.25 [337]	1.25 [31]
PTS-16.5	10.000 [254.0]	7.50 [191]	13.50 [343]	11.75 [298]	7.50 [191]	11.38 [289]	16.50 [419]	4.50 [114]
PTS-20	13.000 [330.0]	7.50 [191]	13.50 [343]	11.75 [298]	8.25 [210]	15.87 [405]	16.50 [419]	4.50 [114]
PTS-25	15.750 [400.0]	7.50 [191]	13.50 [343]	11.75 [298]	8.25 [210]	18.63 [473]	16.50 [419]	4.50 [114]

Contact Troyke for complete line of
Fixturing and Workholding Options

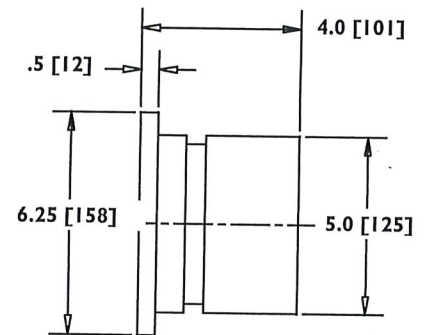
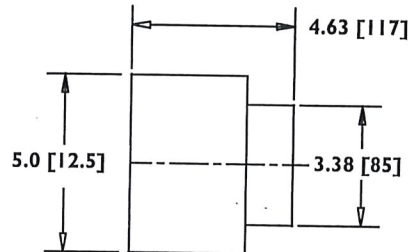
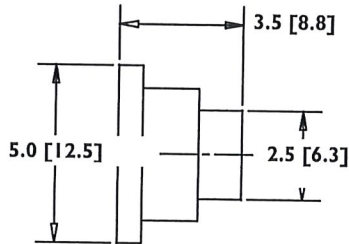
MANUAL 3 JAW CHUCKS

(4 AND 6 JAW
CHUCKS AVAILABLE)



MODEL	A	B	C	D	E	F
CK-6	6.00 [152]	1.520 [38]	2.35 [59]	.10 [2]	2.53 [64]	1.40 [35]
CK-8	8.25 [209]	2.257 [57]	3.12 [79]	.17 [4]	3.56 [90]	1.87 [47]
CK-10	10.00 [254]	2.810 [71]	3.50 [88]	.16 [4]	3.75 [95]	2.37 [60]
CK-12	12.00 [304]	3.257 [82]	4.00 [101]	.16 [4]	4.37 [111]	2.37 [60]
CK-15	15.00 [381]	4.250 [107]	5.78 [146]	.28 [7]	5.54 [140]	3.27 [83]
CK-18	18.00 [457]	5.025 [127]	5.78 [146]	.28 [7]	5.54 [140]	3.27 [83]
CK-21	21.00 [533]	7.025 [178]	6.25 [158]	.28 [7]	5.54 [140]	3.27 [83]
CK-24	24.00 [609]	7.025 [178]	6.53 [165]	.25 [6]	5.54 [140]	3.27 [83]

MANUAL AND PNEUMATIC COLLET FIXTURES



P5C-5



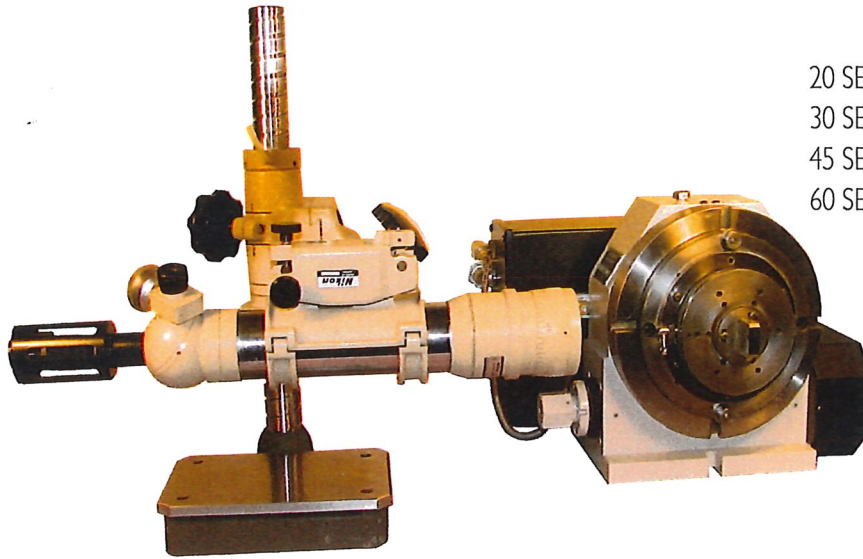
M3J-5 OR
M16C-5



P5C-5

troyke^o Angular Accuracy:

Angular accuracy of each rotary table is checked with an auto-collimator



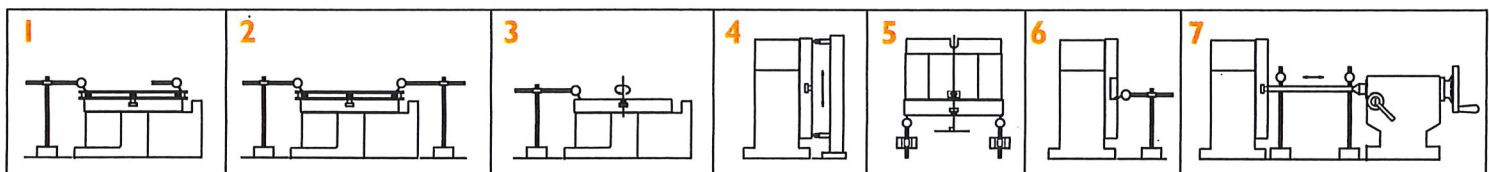
20 SECONDS = .00029 [.007] ON A 6.00 [.152] DIAMETE
 30 SECONDS = .00044 [.011] ON A 6.00 [.152] DIAMETE
 45 SECONDS = .00066 [.016] ON A 6.00 [.152] DIAMETE
 60 SECONDS = .00087 [.022] ON A 6.00 [.152] DIAMETE

Geometric Accuracy:

No.	INSPECTION ITEM		TOLERANCE
1	TABLE FACE FLATNESS (CONCAVE)		.0005 [.013]
2	TABLE FACE PARALLELISM		.0005 [.013]
3	TABLE FACE RUNOUT THRU 360 DEGREES OF ROTATION		.0005 [.013]
4	TABLE FACE PERPENDICULARITY TO FOOT OF BASE	PER 12.0 [304]	.0010 [.025]
5	TABLE FACE PERPENDICULARITY TO TENNON SLOT IN FOOT OF BASE	PER 12.0 [304]	.0010 [.025]
6	CENTER HOLE RUNOUT		+/- .0005 [.013]
7	CENTER HEIGHT DIFFERENCE OF TURNTABLE AND TAILSTOCK	PER 12.0 [304]	+/- .0010 [.025]

* all angular accuracies stated in this catalog are total through 360 degrees rotation of the turntable. (not plus or minus)

NOTE: ALL DIMENSIONS IN [.....] ARE METRIC UNITS



Accuracy:

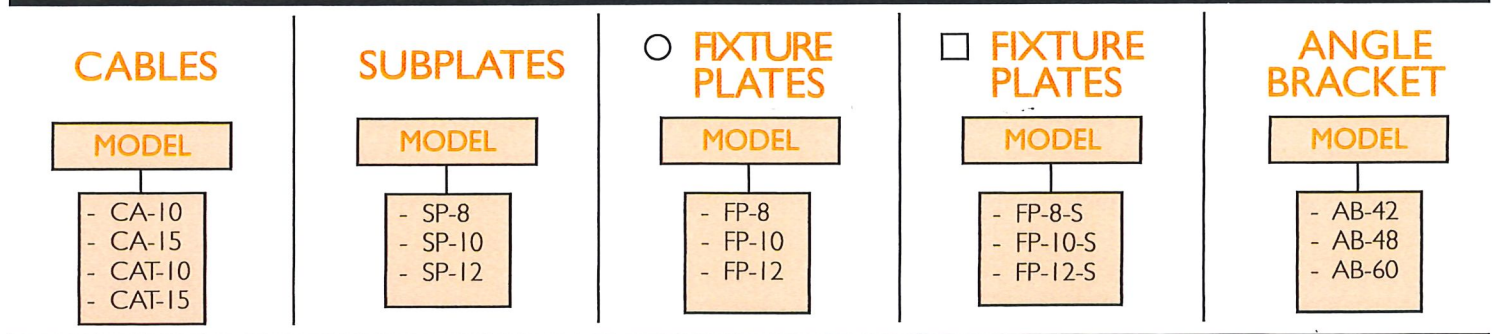
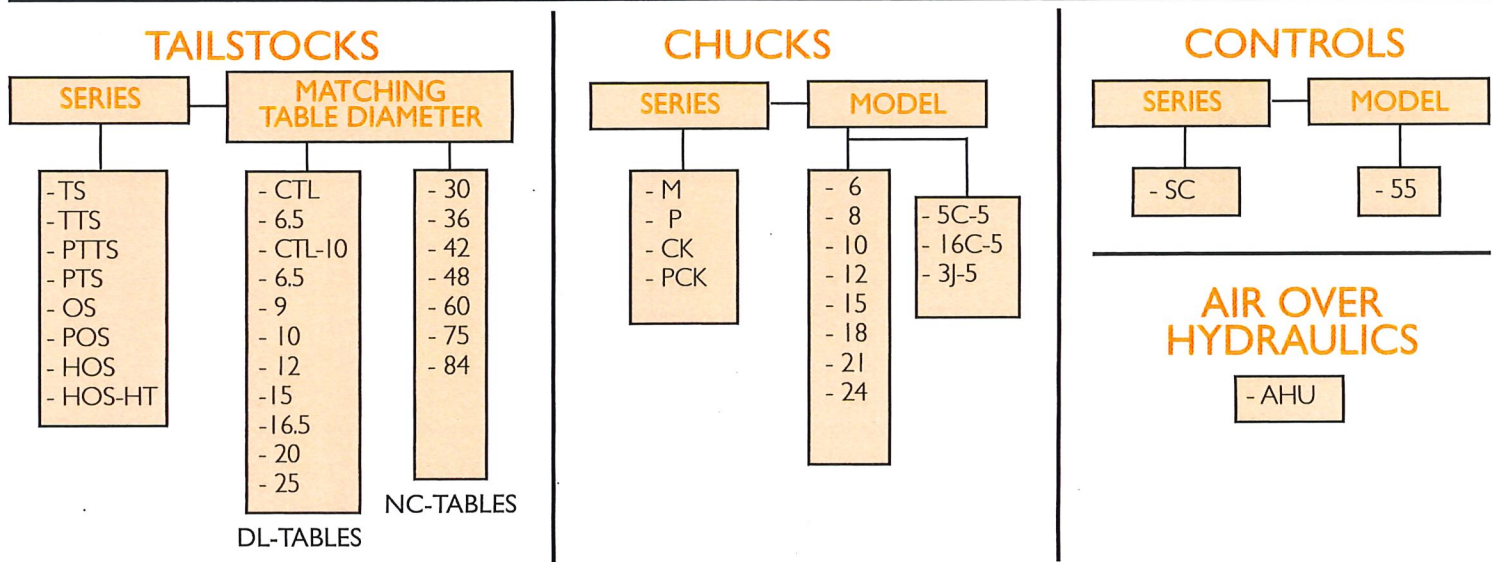
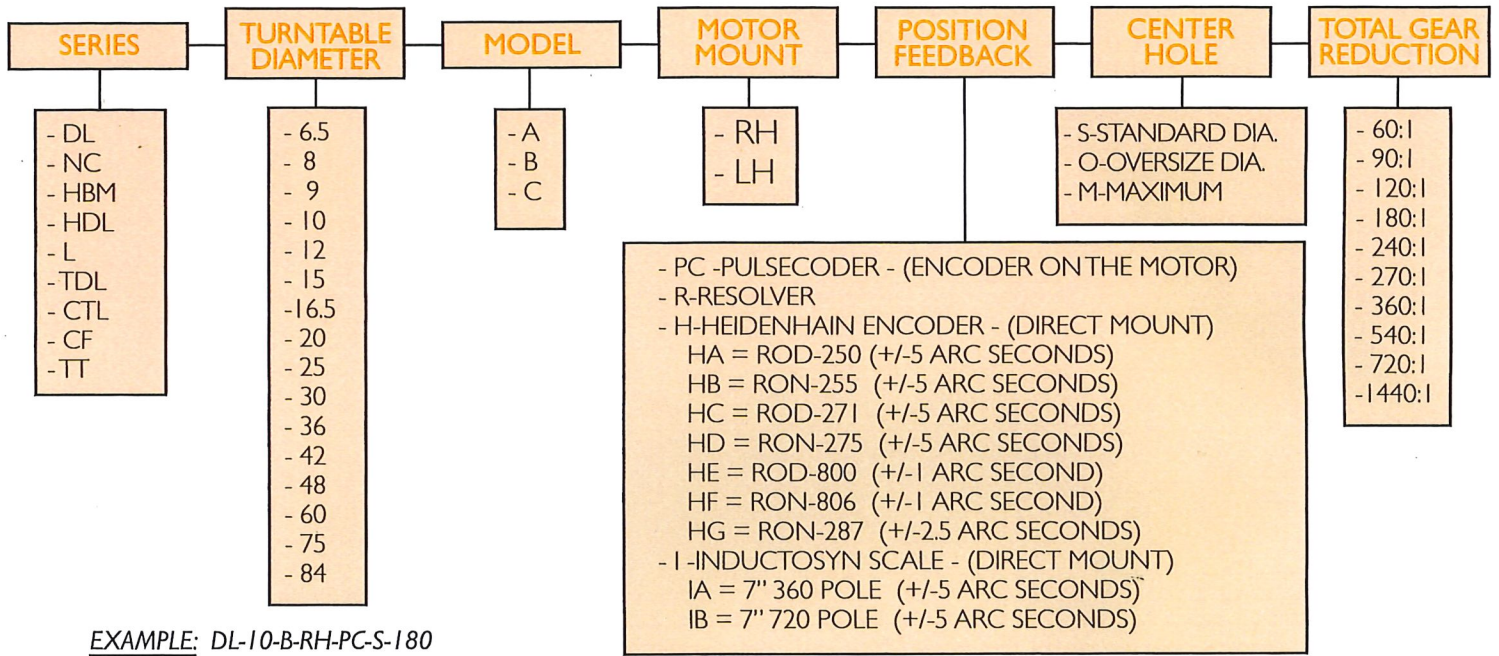
Accuracy is measured in an unloaded condition. The following examples may affect the stated accuracy of the table. (User's fixtures, size and weight of part, off-center parts, outboard supports, tailstock pressures, off-center drilling or milling, fixture mounting surfaces, out of alignment (tir) tailstocks or supports, etc.)

Critical Alignments:

Alignments of tailstocks and outboard supports to the rotary table is critical. Alignments must be within a maximum 0.002" tir. If the runout of the part is greater, or if the tailstock or outboard support is not centered to the rotary table axis, you are in effect bending the part. This requires substantial torque and causes accuracy problems and accelerates wear on the rotary table.

Troyke products illustrated and described herein are protected by U.S. and foreign patents, patents pending and applied for. Illustrations and specifications herein are not binding in detail; we reserve the right to make changes and improvements, incorporating them as conditions warrant.

troyke^o How to Order — Rotary Tables



THANK YOU FOR CHOOSING TROYKE FOR YOUR MACHINE TOOL ACCESSORY NEEDS !

Call to discuss custom specific applications.